



4002 Liberty Bell Road
Fort Scott, Kansas 66701 USA
+1 800.653.3147
+1 620.223.3110
sales@norvellco.com

Smart Sifter

Norvell Smart Sifters have a rock hard maple frame with the finest grade plywood walls and tops. It will have stationary 400 Series Stainless Steel inlets and outlets. The press tops will be held down by our Air Cylinders to ensure uniform and constant compression with easy sieve access. The sifter will be suspended by 1/2" diameter cables from a sturdy, maintenance free, 3" square steel frame or can be ceiling hung. The sifter exterior can be finished with either Food grade epoxy paint or a clear lacquer finish depending on your preference. The standard sifter interior is magnetic stainless steel; optional food grade epoxy painted or Laminate is available to meet sanitary requirements. The door will be equipped with aluminum wedges to help align your sieves properly and allow easy removal or installation of the sieves.



Features:

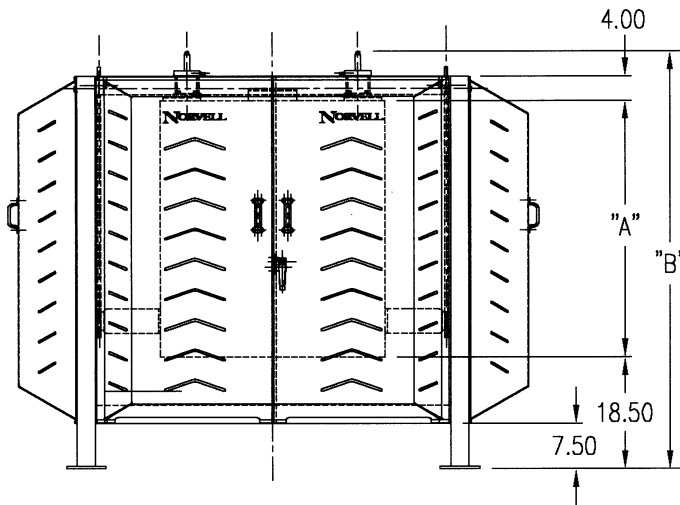
- ◆ Rock hard maple frame construction
- ◆ 5/8" bolt & glue together assembly for rigid box construction
- ◆ Smooth box interiors to prevent infestation
- ◆ Bottom distributors and sieves easily removed
- ◆ Air Cylinders
- ◆ 400 Series Stainless Steel product inlets and outlets
- ◆ Aluminum Door Wedges
- ◆ Simple and economical to operate
- ◆ Floor mounted or Ceiling suspended
- ◆ Accommodates up to 27 sieves
- ◆ Can accommodate multiple separations

Our unique drive has a 2 horsepower, 230/460 volt, 3 phase, TEFC, inverter duty motor enclosed in a steel guard. The drive is attached directly to the sifter box. There are only two bearings per side, and they are mounted for easy and economical maintenance.

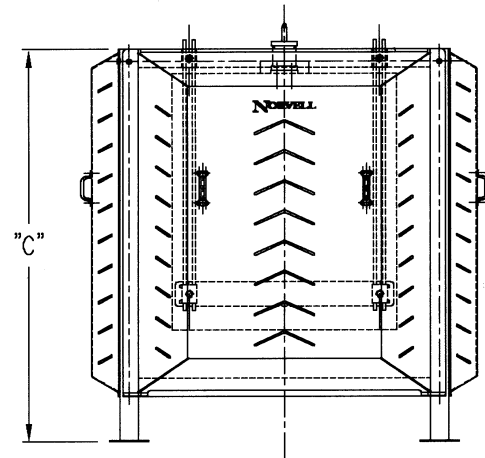
The Smart Sifter's height will vary depending upon the number of sieves you require. Our patented Norvell Sieves come in four different sieve sizes that can be used in the sifter. The four sizes are 28-3/4", 30-7/8", 30-7/8" x 40-7/8" and 40-7/8". Each machine is custom designed to meet the customers required flow.

Custom Sizes are Available to Fit Your Needs!

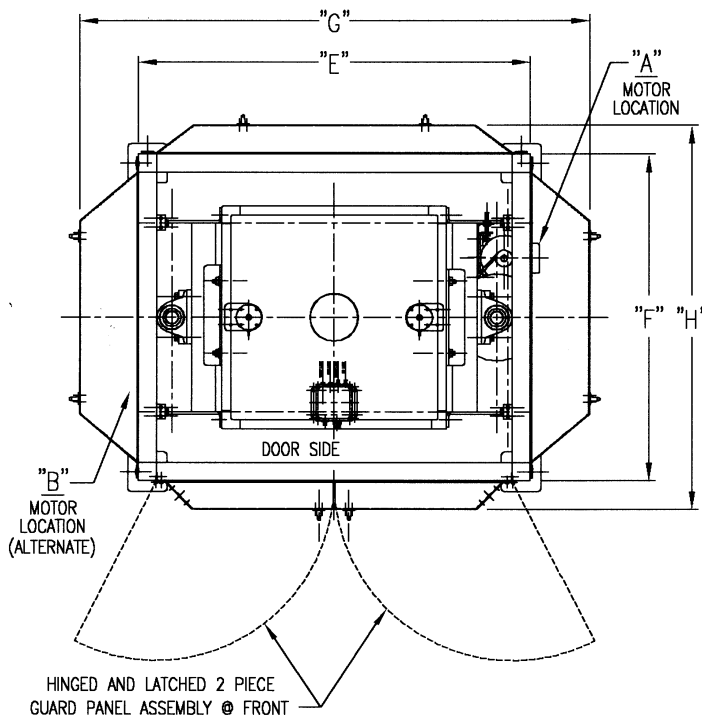
Smart Sifter Dimensions



FRONT VIEW – SMART SIFTER



SIDE VIEW



PLAN VIEW – SMART SIFTER

*Custom Sizes are Available
to Fit Your Needs!*



SIFTER HEIGHT DIMENSION SCHEDULE			
SIFTER BOX HEIGHT "A"	SIFTER HEIGHT "B"	SIFTER FRAME HEIGHT "C"	SIEVE STACK HEIGHT "D"
39.75"	66.38"	62.25"	29.75"
42.50"	69.13"	65.00"	32.50"
54.50"	81.13"	77.00"	44.50"
64.50"	91.13"	87.00"	54.50"
71.00"	97.63"	93.50"	61.00"

SIFTER LENGTH & WIDTH DIMENSION SCHEDULE				
SIFTER SIZE	SIFTER FRAME WIDTH "E"	SIFTER FRAME WIDTH "F"	SIFTER WIDTH "G"	SIFTER WIDTH "H"
#3 28 3/4"	62.38"	52.00"	81.88"	61.44"
#4 30 7/8"	64.50"	54.13"	84.00"	63.57"
#5 30 7/8" x 40 7/8"	64.50"	64.13"	84.00"	73.57"
#6 40 7/8"	74.50"	64.13"	94.00"	73.57"