



4002 Liberty Bell Road
Fort Scott, Kansas 66701 USA
+1 800.653.3147
+1 620.223.3110
sales@norvellco.com

Stainless Steel Model 111 Sifter

The Norvell Stainless Steel Model 111 Sifter is fabricated from 304 stainless steel.

With the tray constructed from aluminum, this combination gives you a sanitary, washable unit that is easy to use and quickly accessible.

Different mesh screens are available with intercrimped backwire to customize your capacity needs.

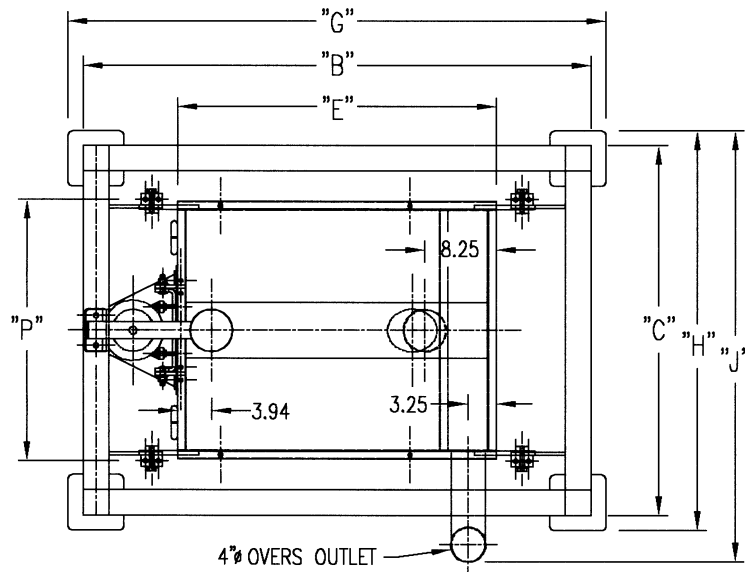


Just like the Norvell Smart Sifter, this unit can be either floor mounted or ceiling suspended. A one horsepower 230/460 volt, TEFC motor with our V-belt drive will provide a 2" circle at 230 rpm. Featuring one inlet and two outlets, the stainless steel sifter exterior is bead blasted, with the frame, drive and guard painted.

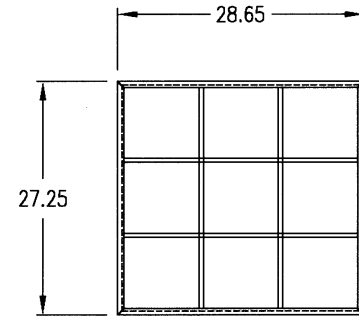
The Norvell Stainless Steel Model 111 Sifter is the ideal sifter for that last minute quality control check. The compact size gets you into those hard to reach places where spacing is limited. The easy release latch system conveniently gets you into the sifter for a quick cleaning or screen change.

Custom Sizes are Available to Fit Your Needs!

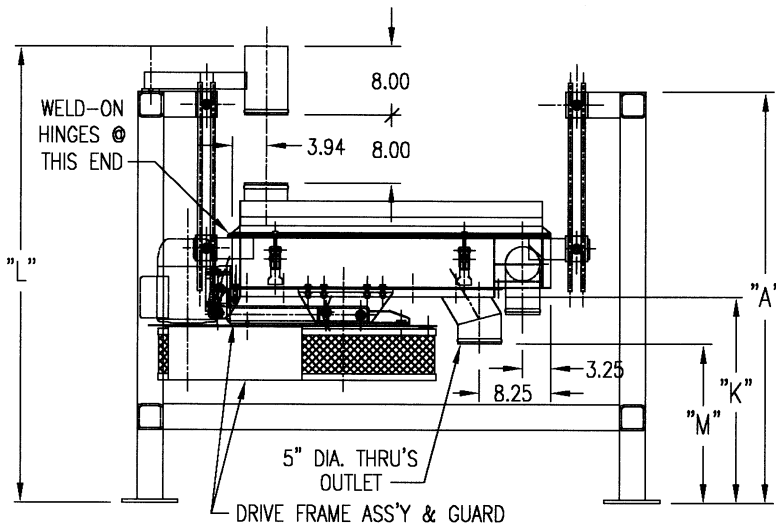
Stainless Steel Sifter Dimensions



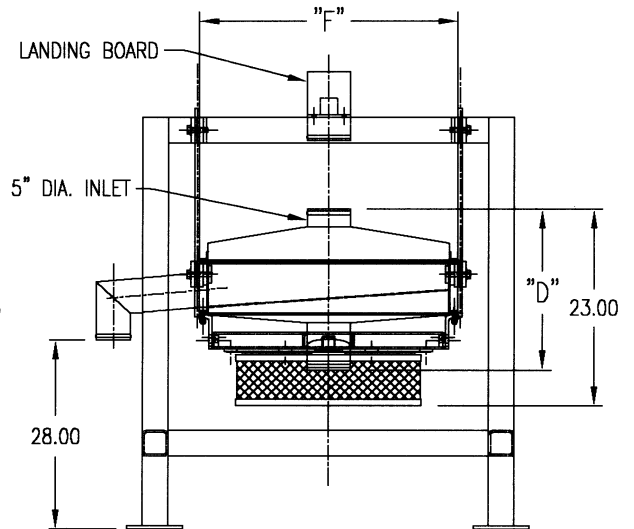
PLAN VIEW – TYPE 111 SIFTER ASSEMBLY



TYPE 111 WILDCAT SIFTER TRAY
4.494 SQ. FEET OPEN AREA @ CLOTHING



SIDE VIEW – TYPE 111 SIFTER ASSEMBLY



END VIEW – TYPE 111 SIFTER ASSEMBLY

TYPE 111 STAINLESS STEEL SIFTER DIMENSION SCHEDULE

SIFTER FRAME HEIGHT "A"	54.00"	OVERALL FRAME LENGTH "G"	62.50"
SIFTER FRAME LENGTH "B"	59.00"	OVERALL FRAME WIDTH "H"	46.75"
SIFTER FRAME WIDTH "C"	43.25"	OVERALL WIDTH "J"	50.38"
S.S. SIFTER BOX HEIGHT "D"	18.78"	FLOOR TO BOX HEIGHT "K"	30.00"
S.S. SIFTER BOX LENGTH "E"	37.00"	FLOOR TO HIGH POINT "L"	59.28"
S.S. SIFTER BOX WIDTH "F"	30.00"	FLOOR TO OUTLET HEIGHT "M"	24.50"