

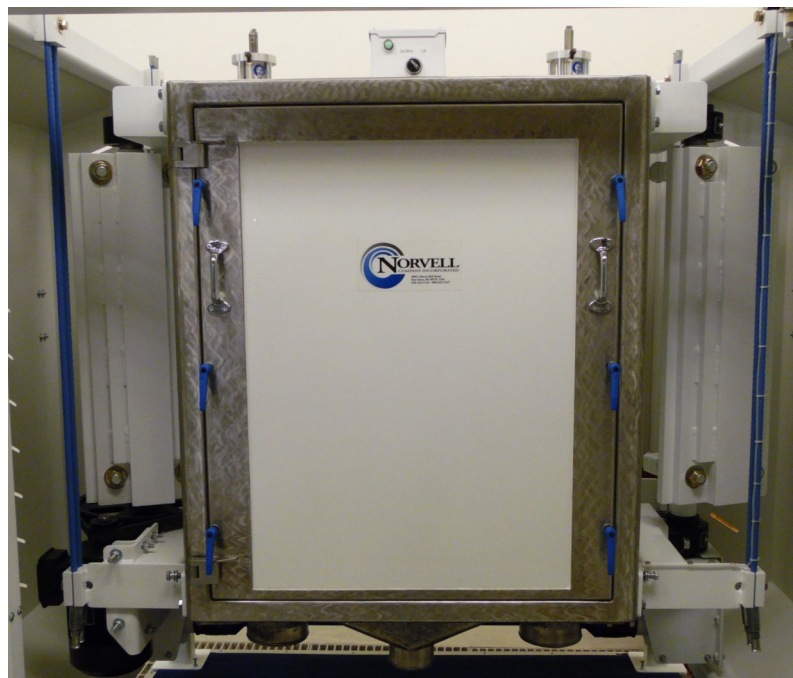


4002 Liberty Bell Road
Fort Scott, Kansas 66701 USA
+1 800.653.3147
+1 620.223.3110
sales@norvellco.com

Stainless Steel Smart Sifter

Norvell Smart Sifters have a stainless steel frame with durable stainless steel lined panles. It will have stationary stainless steel inlets and outlets. The press top will be held down by our Air Cylinders to ensure uniform and constant compression with easy sieve access. The free-swinging sifter will be suspended by 1/2" diameter cables from a sturdy, maintenance free, 3" square steel frame or can be ceiling hung. The standard sifter interior is stainless steel to meet sanitary requirements.

Taking your Food
Safety to the
Next Level!



Features:

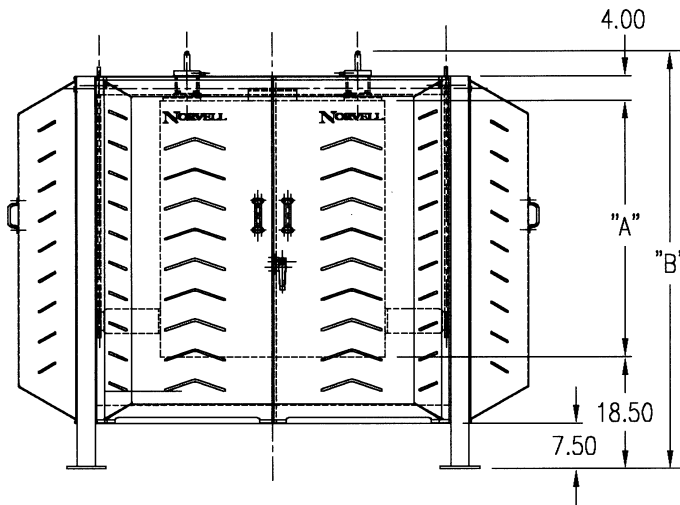
- ◆ Stainless Steel frame construction
- ◆ 5/8" bolt together assembly for rigid box construction
- ◆ Bottom distributors and sieves easily removed
- ◆ Air Cylinders for sieve compression
- ◆ Built in check valves maintain sieve compression if there is a low or a loss of air pressure.
- ◆ Stainless Steel product inlets and outlets
- ◆ Simple and economical to operate
- ◆ Floor mounted or Ceiling suspended
- ◆ Can accommodate multiple separations

Our unique drive has a 2 horsepower, 230/460 volt, 3 phase, TEFC, inverter duty motor enclosed in a steel guard. The drive is attached directly to the sifter box. There are only two bearings per side, and they are mounted for easy and economical maintenance.

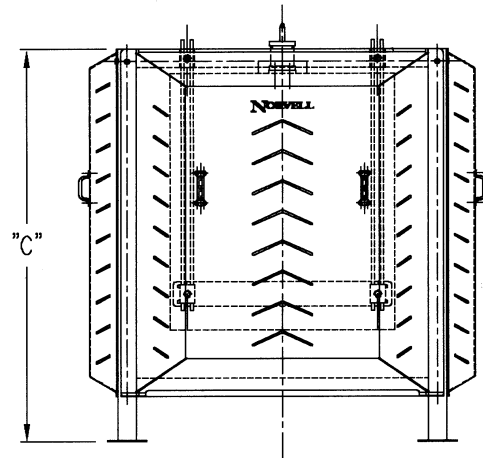
The Smart Sifter's height will vary depending upon the number of sieves you require. Our patented Norvell Sieves come in four different sieve sizes that can be used in the sifter. The four sizes are 28-3/4", 30-7/8", 30-7/8" x 40-7/8" and 40-7/8". Each machine is custom designed to meet the customers required flow.

Custom Sizes are Available to Fit Your Needs!

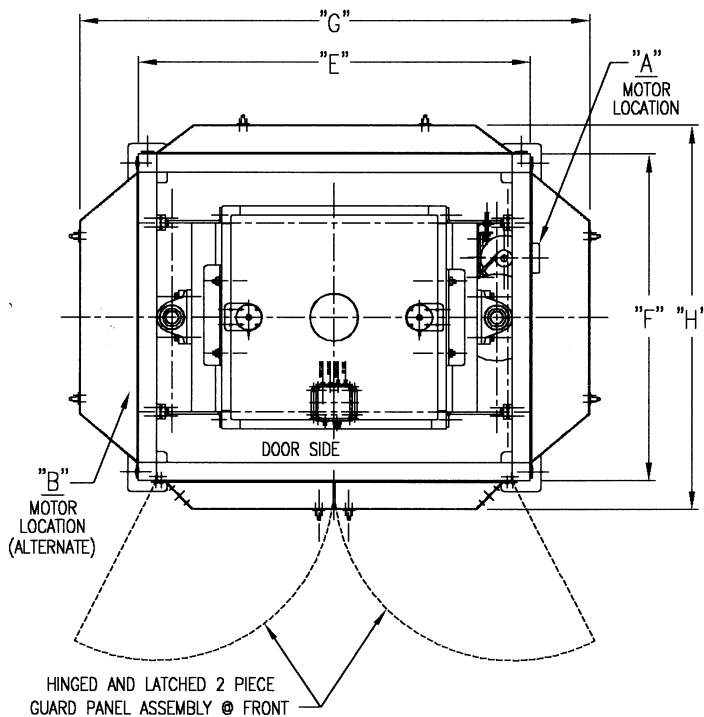
Smart Sifter Dimensions



FRONT VIEW – SMART SIFTER



SIDE VIEW



PLAN VIEW – SMART SIFTER

*Custom Sizes are Available
to Fit Your Needs!*



SIFTER HEIGHT DIMENSION SCHEDULE			
SIFTER BOX HEIGHT 'A'	SIFTER HEIGHT 'B'	SIFTER FRAME HEIGHT 'C'	SIEVE STACK HEIGHT 'D'
39.75"	66.38"	62.25"	29.75"
42.50"	69.13"	65.00"	32.50"
54.50"	81.13"	77.00"	44.50"
64.50"	91.13"	87.00"	54.50"
71.00"	97.63"	93.50"	61.00"

SIFTER LENGTH & WIDTH DIMENSION SCHEDULE				
SIFTER SIZE	SIFTER FRAME WIDTH 'E'	SIFTER FRAME WIDTH 'F'	SIFTER WIDTH 'G'	SIFTER WIDTH 'H'
#3 28 3/4"	62.38"	52.00"	81.88"	61.44"
#4 30 7/8"	64.50"	54.13"	84.00"	63.57"
#5 30 7/8" x 40 7/8"	64.50"	64.13"	84.00"	73.57"
#6 40 7/8"	74.50"	64.13"	94.00"	73.57"